



Year 9 Options Booklet

2024

CONTENTS

Introduction

Art

3D Art & Design

Business Studies

Computer Science

Drama

Food & Nutrition

Geography

Health & Social Care (BTEC)

History

Music

PE (GCSE)

Religious Studies

Spanish

Sport (BTEC)

Travel & Tourism (BTEC)

Triple Science

Assessment Overview

Introduction

This Brochure is designed to give you all the information you need to support your child in making the important decision around what they will study at Oasis Academy John Williams in Years 10 and 11.

We are pleased to offer a wide variety of courses to suit all students. We aim to provide them with a broad range of subjects that will support their aspirations and plans when they leave Oasis Academy John Williams. This may be to secure places at sixth forms and colleges to study A-Levels or vocational courses or applying for apprenticeships.

For Years 10 and 11 **all students** will study English Language, English Literature, Mathematics and Combined Science (worth 2 GCSE's). They will then choose 4 option subjects to study.

For the four options subjects they will firstly choose between:

History or Geography

Students will then choose six other subjects that they are interested in studying. They will put these six subjects in preference order. Numbers 1 to 3 will be the subjects they most want to study. We will try to align students to these three subjects but are sometimes restricted by class sizes and teacher/timetable availability.

If we cannot align students to their top 3 subject choices, we will then look at their choice for preference 4, then 5 and finally preference 6.

The six subjects will be chosen from the following list:

- | | |
|-------------------------------|---------------------------|
| ◇ Art | ◇ History |
| ◇ 3d Art | ◇ Music |
| ◇ Business Studies | ◇ PE (GCSE) |
| ◇ Computer Science | ◇ Religious Studies |
| ◇ Drama | ◇ Spanish |
| ◇ Food Prep & Nutrition | ◇ Sport (BTEC) |
| ◇ Geography | ◇ Travel & Tourism (BTEC) |
| ◇ Health & Social Care (BTEC) | ◇ Triple Science |

Introduction

Whether your child selects to study the more traditional GCSE Subjects or opt for a mixture of GCSE subjects alongside BTEC qualifications, these all have an equal weighting, A BTEC Level 1 / Level 2 Tech Award is equivalent to a GCSE.

All these subjects require hard work, focus and determination to succeed. It is important that students do not choose a subject just because:

- They like their current teacher.
- Their friends are doing it.
- They think it will be easy.

We would highly recommend that you take the opportunity to attend the **Year 9 Parents Evening on Tuesday 12 March**. Here you will be able to discuss your child's progress and their suitability to study the subject into Year 10 & 11. There will also be further information on subjects that are only offered for Year 10 & 11.

Please note that the Options form will be completed through the My Child at School (MCAS) App or on your child's Bromcom Portal. The form will go live on **Wednesday 13 March** and the deadline for making options choices is **9:00AM Tuesday 19 March**. We will send information on how to complete the form through MCAS on Wednesday 13 March.

Option choices will not be confirmed until Term 6. This means that it is important that your child continue to work hard in all their subjects.

Thank you in advance for your support.

If you have any queries, please contact us on MCAS or info@oasisjohnwilliams.org.



Mrs Zoe Hill
Assistant Principal - Student Achievement

Art

Exam Board: AQA



What will I study?

- ◆ Skills based art curriculum, which will allow you to express your creative imagination as well as providing opportunities to practise and develop mastery in the key processes of art; drawing, painting, printing, textiles and sculpture.
- ◆ Study of key artists and the development of knowledge of your

What skills will I gain?

- ◆ Developing drawing and painting skills
- ◆ Develop skills in printing
- ◆ Creating design ideas for final pieces
- ◆ Creating ceramic and plaster sculptures and pots

How is the course assessed?

Component 1

60% Coursework

How it is assessed

Teacher assessed & externally moderated

Component 2

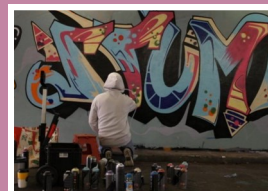
40% Exam

How it is assessed

Teacher assessed & externally moderated

What careers could Art help me access?

- ◆ Graphic Design
- ◆ Animation
- ◆ Artist
- ◆ Illustrator
- ◆ Hairdressing
- ◆ Make-up Artist
- ◆ Designer
- ◆ Graffiti Artist



3D Art

Exam Board: AQA



What will I study?

- ◆ Three-dimensional design is the design, modelling and making of sculptures
- ◆ The difference between 3D Art and Art, Craft & Design is that the final outcomes in 3D Art will be 3D sculptures, rather than drawings or paintings.

What skills will I gain?

- ◆ How to create your own sculptures inspired by the artists
- ◆ Creating design drawings and collages
- ◆ Create sculptures using the four main sculpting techniques; casting, carving, drawing designing and making sculptures
- ◆ How to create sculptures using cardboard, glue guns, clay and plaster

How is the course assessed?

60% Coursework

40% Exam

How it is assessed:

Teacher Assessed & Externally Moderated

How it is assessed:

Teacher Assessed & Externally Moderated

What careers could 3D Art help me access?

- ◆ Architecture
- ◆ Carpenter
- ◆ Prop Making
- ◆ Set Building
- ◆ Jewellery Maker
- ◆ Sculptor
- ◆ Artist
- ◆ Joinery
- ◆ 3D Design
- ◆ Graphic Designer
- ◆ Set design for TV, Film or Theatre
- ◆ Welder



Business Studies

Exam Board: Edexcel



What will I study?

Y10-Investigating Small Business

- ◆ Becoming an entrepreneur
- ◆ Spotting a business opportunity
- ◆ How to start a new business
- ◆ Making a new business effective
- ◆ The opportunities and challenges facing small businesses

Y11-Building a Business

- ◆ Methods of business growth
- ◆ Business ethics
- ◆ Making marketing decisions
- ◆ How to operate a growing business
- ◆ Making financial decisions
- ◆ Making human resource management decisions

What skills will I gain?

- ◆ Problem Solving
- ◆ Decision Making
- ◆ Adaptability
- ◆ How to progress within a business
- ◆ How to start your own business

How is the course assessed?

Paper 1

Integrating Small Businesses

How it is assessed

1 hour 45 minutes
50% of qualification
Written Exam

Paper 2

Building a Business

How it is assessed

1 hour 45 minute
50% of qualification
Written Exam

What careers could Business Studies help me access?

- ◆ Accounting
- ◆ Banking
- ◆ Career in fundraising
- ◆ Medicine
- ◆ Marketing
- ◆ Career in Property
- ◆ Retail Management
- ◆ Farming
- ◆ Television
- ◆ Recruitment
- ◆ Online Influencer
- ◆ Entrepreneur



Computer Science

Exam Board: Edexcel



What will I study?

- ◆ **Topic 1** - Computational thinking
- ◆ **Topic 2** - Data
- ◆ **Topic 3** - Computers
- ◆ **Topic 4** - Networks
- ◆ **Topic 5** - Issues and Impact
- ◆ **Topic 6** - Programming in Python

What skills will I gain?

- ◆ An understanding of what algorithms are, what they are used for and how they work, ability to follow, amend and write algorithms; ability to construct truth tables
- ◆ An understanding of binary, data, representation, data storage and compression
- ◆ An understanding of hardware and software components of computer systems and characteristics of programming languages
- ◆ An understanding of computer networks and network security
- ◆ Awareness of emerging trends in computing technologies and the impact of computing on individuals, society and the environment, including ethical, legal and ownership issues.
- ◆ Learn to code in python

How is the course assessed?

Paper 1

Principles of Computer Science

How it is assessed

1 hour 30 mins
50% of Qualification
Covering Topics 1-5
Written exam

Paper 2

Application of Computational Thinking

How it is assessed

2 hours
50% of Qualification
Covering Topic 6
Completed on screen

What careers could Computer Science help me access?

- ◆ Web Designer
- ◆ Application Analyst
- ◆ Game Designer
- ◆ Data Analyst
- ◆ Applications Developer
- ◆ Web Developer
- ◆ Forensic Computer Analyst
- ◆ Software Engineer
- ◆ Cybersecurity Manager
- ◆ Hardware Engineer



Drama

Exam Board: Eduqas



What will I study?

- ◆ Developing Acting Skills
- ◆ Learn new acting skills
- ◆ Studying plays
- ◆ Performing scripts
- ◆ Devising drama
- ◆ How to work in groups
- ◆ How to work individually
- ◆ Performing to the class
- ◆ Designing set/lighting costume
- ◆ Trips to theatre

What skills will I gain?

- ◆ Communication Skills; how to work with others to create a performance
- ◆ Leadership Skills; learn how to take the lead when creating a performance
- ◆ Teamwork Skills; to work with others to meet a goal
- ◆ Interpersonal Skills; develop a good relationship when working with a group
- ◆ Adaptable Skills: learn how to remember a line and when to adapt

How is the course assessed?

Component 1	Component 2	Component 3
Devise, create and perform in a group	Perform a published script in a group	Written exam on a play we study and professional theatre we watch
<u>How it is assessed</u> Performance & coursework Total: 40%	<u>How it is assessed</u> Performance Total: 20%	<u>How it is assessed</u> Written Exam Total: 40%

What careers could Drama help me access?

- ◆ Acting
- ◆ Law
- ◆ Medicine
- ◆ Journalism
- ◆ Teaching
- ◆ Business
- ◆ Design
- ◆ Film/Theatre Director
- ◆ Theatre Technician



Food Preparation & Nutrition

Exam Board: Eduqas



What will I study?

- ◆ The principles of nutrition
- ◆ The science of food
- ◆ Where food comes from
- ◆ Diet and good health
- ◆ Factors affecting food choice

What skills will I gain?

- ◆ Functions of ingredients
- ◆ Science of cooking
- ◆ Theory that supports cooking
- ◆ Basic food hygiene & safety
- ◆ Creating a balanced nutritional meal

How is the course assessed?

Coursework

- ◆ Written and practical - this includes three courses and presenting it to a restaurant standard
- ◆ Food science experiment

Exam

Written exam - mixture of short and longer written answers

How it is assessed

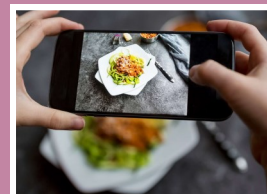
Coursework - 50%

How it is assessed

Written exam - 1 hour 45 minutes
50%

What careers could Food & Nutrition help me access?

- ◆ Chef
- ◆ Caterer
- ◆ Food Product Designer
- ◆ Food Nutritionist
- ◆ Health & Fitness
- ◆ Food Marketing & Advertising
- ◆ Food Scientist
- ◆ Food Writer/Blogger
- ◆ Teacher
- ◆ Food Technician



Geography

Exam Board: AQA



What will I study?

- ◆ **Paper 1 - Living with the Physical Environment**
 - Challenge of natural hazards, tectonic hazards, weather hazards and extreme weather in the UK
 - Climate change
 - The Living World: pond ecosystems, tropical rainforests and hot deserts
 - The physical landscape of the UK: rivers and coasts
- ◆ **Paper 2 - Challenges in the Human Environment**
 - Urban issues and challenges: urbanisation, urban growth in Rio de Janeiro and urban change in Bristol
 - Changing Economic World; the development gap, the merging economy of Nigeria and the changing economy of the UK
 - Resource Management: food, water and energy
- ◆ **Paper 3 - Geographical Applications**
 - Fieldwork
 - Physical - Lyme Regis, Dorset
 - Human - Harbourside, Bristol
 - Issue Evaluation (decision making exercise)

What skills will I gain?

- ◆ You will develop knowledge, understanding and appreciation of the great differences in cultures, political systems, economies, landscapes and environments across the world
- ◆ You will develop critical understanding of the current challenges that face our planet whilst championing our role as 'active global citizens' in shaping the world for generations to come.
- ◆ As a geographer you will develop a wide range of skills, including; interpretation and analysis, the use of GIS, decision making, evaluation and fieldwork enquiry

How is the course assessed?

Paper 1	Paper 2	Paper 3
Physical Geography	Human Geography	Geography Applications
<u>How it is assessed</u>	<u>How it is assessed</u>	<u>How it is assessed</u>
Written Exam: 90 minutes	Written Exam: 90 minutes	Written Exam: 90 minutes
Total: 35%	Total: 35%	Total: 30%

What careers could Geography help me access?

- ◆ Marine Biologist
- ◆ Geologist
- ◆ Volcanologist
- ◆ Tourism
- ◆ Healthcare
- ◆ Teaching
- ◆ Scientific Research
- ◆ Marketing
- ◆ Business
- ◆ Local & National Government
- ◆ Armed Forces
- ◆ Finance
- ◆ Human Resources
- ◆ Media e.g. Journalist



BTEC Health & Social Care

Exam Board: Pearson - BTEC Level 1/Level 2
Tech Award



What will I study?

- ◆ Life stages and key characteristics in the physical, intellectual, emotional and social (PIES) development classifications and the different factors that can affect an individual's growth and development
- ◆ Different life events and how individuals can adapt or be supported through changes caused by life events
- ◆ Health & social care conditions, how they can be managed by the individual and different health and social care services that are available
- ◆ The barriers and obstacles an individual may encounter and how these can be overcome
- ◆ The skills, attributes and values required to give care and how these benefit the individual
- ◆ How factors can affect an individual's current health and wellbeing
- ◆ How physiological indicators and an individual's lifestyle choices determine physical health
- ◆ The use of the person-centred approach
- ◆ Recommendations and actions to improving health and wellbeing and the barriers or obstacles individuals may face when following recommendations and the support available to overcome

What skills will I gain?

- ◆ Health and social care values
- ◆ Effective communication in Health & Social Care
- ◆ How to promote health and well being
- ◆ Problem solving
- ◆ Organisation skills
- ◆ Ability to manage stressful situations
- ◆ How to manage the care of individuals
- ◆ Managing Deadlines

How is the course assessed?

Component 1	Component 2	Component 3
Human lifespan development	Health & social care services and values	Health & wellbeing
<u>How it is assessed</u> Coursework Internal assessment & externally moderated	<u>How it is assessed</u> Coursework internal assessment & externally moderated	<u>How it is assessed</u> Written exam - 2 hours

What careers could BTEC Health & Social Care help me access?

- ◆ Care Worker
- ◆ Nursery Assistant
- ◆ Social Worker
- ◆ Charity Worker
- ◆ Healthcare Assistant
- ◆ Childminder
- ◆ Nursing
- ◆ Midwifery
- ◆ Nutritionist
- ◆ Dental Nurse
- ◆ Teaching Assistant



History

Exam Board: Edexcel



What will I study?

- ◆ **Paper 1 - Thematic study and historic environments:**
 - Migrants in Britain - c800-present
 - Notting Hill, c1948-c1970
- ◆ **Paper 2 - Period study and British depth study:**
 - Superpowers and the Cold War, 1941-91
 - Early Elizabethan England, 1558-1588
- ◆ **Paper 3 - Modern depth study:**
 - Weimar and Nazi Germany, 1918-39

What skills will I gain?

- ◆ Learn to build up a picture of the past and become skilled at interpreting the evidence that has been left behind
- ◆ You will develop empathy and understanding of the lives of others as you study a wide variety of cultures and societies different to our own
- ◆ Develop an understanding of the context and chronology of events in the past
- ◆ How to evaluate the causes and consequences of change and how it has been experienced, promoted, shaped or resisted by different people at different times
- ◆ How to analyse the significance of events and become skilled in arguing, reasoning, discussion and critical analysis.
- ◆ How to be an effective communicator, with strong research, interpersonal, organisational, analytical and intellectual skills.

How is the course assessed?

Paper 1	Paper 2	Paper 3
Thematic study and historic environments:	Period study and British depth study	Modern depth study
<u>How it is assessed</u> Written Exam: 1 hour 15 minutes 52 marks (4SPAG) - 30%	<u>How it is assessed</u> Written Exam: 1 hour 45 minutes 64 marks - 40%	<u>How it is assessed</u> Written Exam: 1 hour 20 minutes 52 marks (4SPAG) - 30%

What careers could History help me access?

- ◆ Heritage Management
- ◆ Archaeology
- ◆ Conservation
- ◆ Journalism
- ◆ Research
- ◆ Teaching
- ◆ Museum Curator
- ◆ Archivist
- ◆ Librarian
- ◆ Gallery Assistant
- ◆ Law
- ◆ Politics
- ◆ Business



Music

Exam Board: Eduqas



What will I study?

You will study a variety of musical styles including:

- ◆ Pop Music
- ◆ Film Music
- ◆ Musical Theatre
- ◆ Jazz and Blues
- ◆ Classical Music

What skills will I gain?

- ◆ Performing skills on your chosen instrument
- ◆ Composing music in a variety of styles
- ◆ Music technology skills
- ◆ Working with others

How is the course assessed?

Performance

Solo and ensemble

Composing

Making your own music

Listening

Describing music

How it is assessed

Coursework
30%

How it is assessed

Coursework
30%

How it is assessed

Written Exam
40%

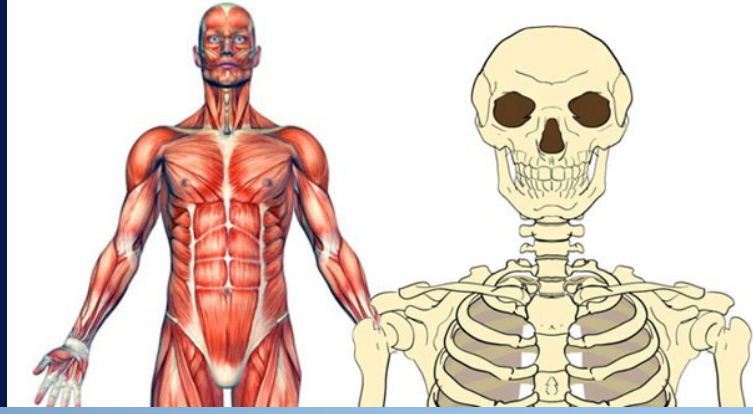
What careers could Music help me access?

- ◆ Performer
- ◆ Teaching
- ◆ Songwriter
- ◆ Conductor
- ◆ Composer
- ◆ Recording Engineer
- ◆ Promotor
- ◆ Musician
- ◆ Sound Engineer



GCSE PE

Exam Board: AQA



What will I study?	What skills will I gain?
<ul style="list-style-type: none"> Applied anatomy and physiology Movement analysis Physical training Use of data Sports psychology Socio-cultural influences Health, fitness and wellbeing 	<ul style="list-style-type: none"> Analysis and evaluation Communication & social skills Team work Physical fitness Physical skill Tactical development

How is the course assessed?

Paper 1	Paper 2	Practical	Coursework
The human body and movement in physical activity and sport	Socio-cultural influences and well-being in physical activity	Performance in physical activity and sport in 3 sports	
<u>How it is assessed</u> Written exam: 1 hour 15 mins 30% of GCSE	<u>How it is assessed</u> Written exam: 1 hour 15 mins 30% of GCSE	<u>How it is assessed</u> Internal assessment, external moderation 30% of GCSE across 3 sports	<u>How it is assessed</u> Coursework 10% of GCSE

What careers could GCSE PE help me access?

<ul style="list-style-type: none"> Sport Psychologist PE Teacher Sports Marketing Sports Coach Professional Sports Person Personal Trainer Sports Nutritionist 	<ul style="list-style-type: none"> Emergency Services Armed Forces Outdoor & Adventure Activities Instructor 	
---	---	--

Religious Studies

Exam Board: Eduqas



What will I study?

◆ Philosophical and Ethical Issues in the Modern World

Prejudice & discrimination, Crime & Punishment, Extremism & Poverty, Human Rights & Equality.

◆ Christianity

The nature of God, Jesus Christ, Afterlife and Religious Festivals

◆ Islam

The nature of Allah, Prophets, Angels, Afterlife and Religious Festivals

What skills will I gain?

- ◆ You will have the opportunity to explore and respond to questions about meaning, purpose, beliefs and values.
- ◆ Gain an appreciation of how religion, philosophy and ethics form the basis of our culture which enables you to reflect on and develop your own attitude to ethical and religious issues.
- ◆ You will develop empathy as you will learn to understand responses to a variety of moral issues and viewpoints other than your own.
- ◆ Develop analytical and critical thinking skills by looking at the relative merits of different arguments.
- ◆ You can become skilled in arguing, reasoning and critical analysis of your beliefs of your own and others around you

How is the course assessed?

Paper 1

Philosophical and Ethical Issues in the Modern World

How it is assessed

Written Exam: 2 hours
50% of Qualification

Paper 2

Christianity

How it is assessed

Written Exam: 1 hour
25% of Qualification

Paper 3

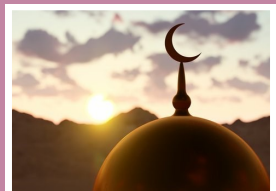
Islam

How it is assessed

Written Exam: 1 hour
25% of Qualification

What careers could Religious Studies help me access?

- | | |
|-------------------------------------|---------------------------|
| ◆ Charity Work | ◆ Human Resources |
| ◆ Paralegal | ◆ Law |
| ◆ Archivist (Museums and Libraries) | ◆ Politics/ Civil Service |
| ◆ Missionary | ◆ Social/ Public Services |
| ◆ Journalism | ◆ Media |
| ◆ Teacher | ◆ Social Worker |
| | ◆ Counselling |



Spanish

Exam Board: AQA



What will I study?

- ◆ **Theme 1** - Identity and Culture
- ◆ **Theme 2** - Local, National, International and Global areas of interest
- ◆ **Theme 3** - Current and Future study and employment

What skills will I gain?

- ◆ Discover techniques for boosting memory
- ◆ Improve listening skills - essential for leadership roles
- ◆ Improved cognitive problem solving
- ◆ Improve your social skills
- ◆ Boost your creativity and ability to think outside the box
- ◆ Learn to be tolerant of others

How is the course assessed?

Speaking Exam	Writing Exam	Listening and Reading Exam
<p><u>How it is assessed</u></p> <p>25% of Qualification</p> <p>1x Role play (5 questions)</p> <p>1x Photo (5 questions)</p> <p>You chose a theme for a conversation</p>	<p><u>How it is assessed</u></p> <p>25% of Qualification</p> <p>Foundation - 90 words on a chosen topic</p> <p>Higher - 150 words on a chosen topic</p> <p>Written Exam</p>	<p><u>How it is assessed</u></p> <p>Listening - 25% of Qualification</p> <p>Reading - 25% of Qualification</p> <p>Written Exams</p>

What careers could Spanish help me access?

- ◆ Law
- ◆ History
- ◆ Politics
- ◆ Travel Industry
- ◆ Art
- ◆ Medicine
- ◆ Computer Studies
- ◆ Foreign correspondent
- ◆ Music
- ◆ Sport
- ◆ Linguistic Forensics
- ◆ Marketing
- ◆ Intelligence Specialist
- ◆ Education
- ◆ Customs Officer
- ◆ Business



BTEC Sport

Exam Board: Pearson - BTEC Level 1/Level 2 Tech Award



What will I study?

- ◆ Explore the different types and provision of sport and physical activity available for different types of participants
- ◆ Research equipment and technological advances in a chose sport or physical activity and how to prepare our bodies to participate in this activity

What skills will I gain?

- ◆ Investigate components of fitness and their effect on performance
- ◆ Develop an understanding of the importance of fitness and the different types of fitness

How is the course assessed?

Component 1	Component 2	Component 3
Preparing participants to take part in sport and physical activity	Taking part and improving other participants sporting performance	Developing fitness to improve other participants performance in sport and physical activity
<u>How it is assessed</u> Coursework Internally marked and	<u>How it is assessed</u> Coursework Internally marked and externally	<u>How it is assessed</u> Written Exam 1 hour 30 minutes

What careers could BTEC Sport help me access?

- ◆ Sports Psychologist
- ◆ Physiotherapist
- ◆ PE Teacher
- ◆ Sports Coach
- ◆ Sports Scientist
- ◆ Emergency Services
- ◆ Sports Journalist
- ◆ Professional sports
- ◆ Personal Trainer
- ◆ Armed Forces
- ◆ Sports Marketing
- ◆ Nutritionist
- ◆ Activities Instructor



BTEC Travel & Tourism

Exam Board: Pearson - BTEC Level 1/Level 2
Tech Award



What will I study?

- ◆ The aims of travel and tourism organisations, how different organisations work together and types of travel and tourism, the features that make destinations appealing to visitors and different travel routes.
- ◆ How organisations use market research to identify travel and tourism trends, and customer needs and preferences, and selection of products and services and planning a holiday to meet customer needs and preferences.
- ◆ Factors that may influence global travel and tourism, and how travel and tourism organisations and destinations respond to these factors, and the potential impact of tourism on global destinations.

What skills will I gain?

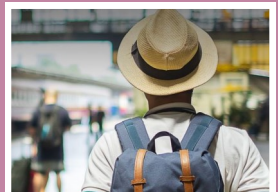
- ◆ Organisation and working to deadlines
- ◆ Ability to learn and adapt
- ◆ Problem solving
- ◆ Using your initiative
- ◆ Independent learning
- ◆ Knowledge and skills around Travel & Tourism industry

How is the course assessed?

Component 1	Component 2	Component 3
Travel and Tourism Organisations and Destinations	Customer Needs in Travel and Tourism	Influences on Global Travel & Tourism
How it is assessed Coursework Internally marked and	How it is assessed Coursework Internally marked and externally	How it is assessed Written Exam 2 Hours

What careers could BTEC Travel & Tourism help me access?

- ◆ Tourism Officer
- ◆ Tour Manager
- ◆ Travel Consultant
- ◆ Journalist
- ◆ Media
- ◆ Teacher
- ◆ Travel Agent
- ◆ Cabin Crew
- ◆ Pilot
- ◆ Hotel Manager
- ◆ Park Ranger



Triple Science

Exam Board: AQA



What will I study?

GCSE Chemistry

- ♦ Atomic structure & Periodic Table
- ♦ Bonding, Structure, and the properties of matter
- ♦ Quantitative Chemistry
- ♦ Chemical changes
- ♦ Energy Changes
- ♦ The rate and extent of chemical change
- ♦ Organic Chemistry
- ♦ Chemical analysis
- ♦ Chemistry of the atmosphere

GCSE Physics

- ♦ Energy
- ♦ Electricity
- ♦ Particle model of matter
- ♦ Atomic structure
- ♦ Forces
- ♦ Waves
- ♦ Magnetism and electromagnetism
- ♦ Space Physics

GCSE Biology

- ♦ Cell Biology
- ♦ Organisation
- ♦ Infection and response
- ♦ Bioenergetics
- ♦ Homeostasis and response
- ♦ Inheritance, variation and evolution
- ♦ Ecology

What skills will I gain?

- ♦ We believe that science has something to offer every student. That is why we offer the additional opportunity of Triple Science OAJW. This course will equip with all the necessary tools for the aspiring scientist
- ♦ Develop strong practical skills and a comprehensive understanding of the scientific theory behind the experiment
- ♦ Opportunity to gain 3 separate Science GCSE's

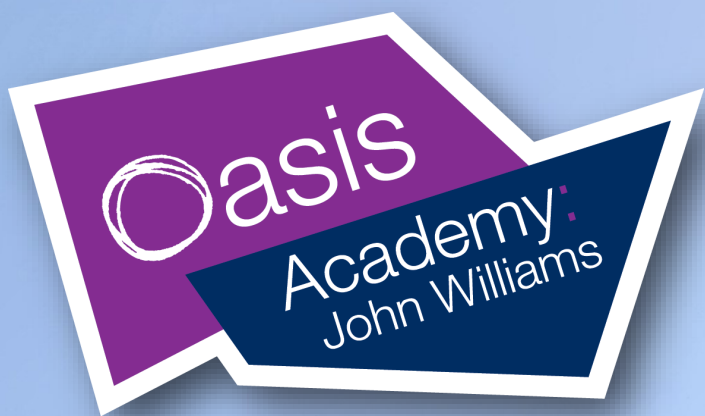
How is the course assessed?

GCSE Chemistry		GCSE Physics		GCSE Biology	
Paper 1	Paper 2	Paper 1	Paper 2	Paper 1	Paper 2
<u>How it is assessed</u> 1 hour 45 mins 50% of qualification Covering topics 1-5 Completed on paper	<u>How it is assessed</u> 1 hour 45 mins 50% of qualification Covering topics 6-10 Completed on paper	<u>How it is assessed</u> 1 hour 45 mins 50% of qualification Covering topics 1-4 Completed on paper	<u>How it is assessed</u> 1 hour 45 mins 50% of qualification Covering topics 5-8 Completed on paper	<u>How it is assessed</u> 1 hour 45 mins 50% of qualification Covering topics 1-4 Completed on paper	<u>How it is assessed</u> 1 hour 45 mins 50% of qualification Covering topics 5-7 Completed on paper

What careers could Triple Science help me access?

- ♦ Scientist
- ♦ Physiotherapy
- ♦ Sports Science
- ♦ Ecologist
- ♦ Botanist
- ♦ Pharmacist
- ♦ Veterinary care
- ♦ Teaching
- ♦ Medicine
- ♦ Engineer
- ♦ Electrician
- ♦ Astronomer
- ♦ Nursing





academy
john williams

Course Assessment Structure

2024

CONTENTS	Coursework Assessment Structure
Art	60% coursework 40% practical exam
3D Art & Design	60% coursework 40% practical exam
Business Studies	100% written exam
Computer Science	100% exam (50% practical, 50% written)
Drama	60% performance & coursework, 40% written exam
Food & Nutrition	50% practical & coursework, 50% written exam
Geography	100% written exam
Health & Social Care BTEC	2 x coursework assessments & 1 written exam
History	100% written exam
Music	60% performance & coursework, 50% written exam
PE (GCSE)	40% practical & coursework, 60% written exam
Religious Studies	100% written exam
Spanish	100% written exam
Sport (BTEC)	2 x coursework assessments & 1 written exam
Travel & Tourism	2 x coursework assessments & 1 written exam
Triple Science	100% written exam